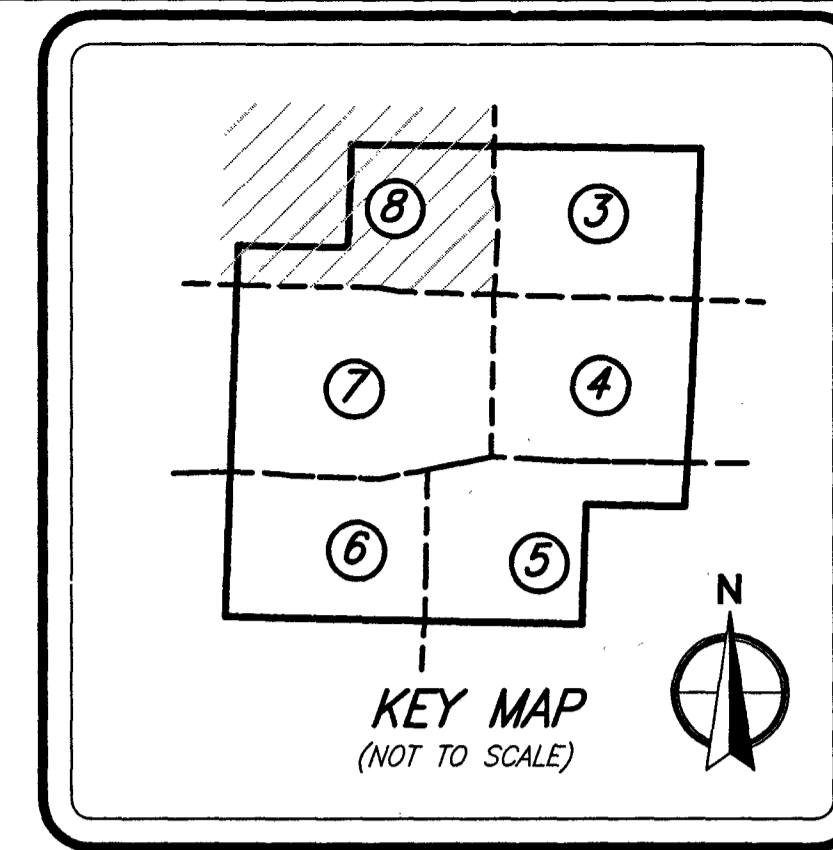


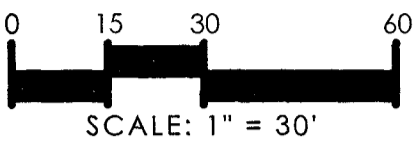
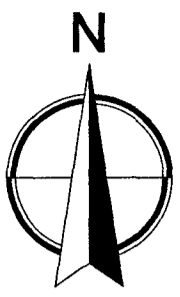
# BLOSSOM TRAIL

BEING A PARCEL OF LAND LYING WITHIN A PORTION OF THE NORTHEAST QUARTER (NE 1/4) OF THE SOUTHEAST QUARTER (SE 1/4) OF SECTION 35, TOWNSHIP 44 SOUTH, RANGE 42 EAST, CITY OF GREENACRES, PALM BEACH COUNTY, FLORIDA.



# 134

SHEET 8 OF 8 SHEETS



N 1/4 CORNER SECTION 35, TOWNSHIP 44 SOUTH, RANGE 42 EAST, PALM BEACH COUNTY, FLORIDA  
POINT NO: 42104  
N 826266.035  
E 940282.350

WEST 1/4 CORNER SECTION 35, TOWNSHIP 44 SOUTH, RANGE 42 EAST, CALC FROM COUNTY DATA  
POINT NO: 42118  
N 823561.808  
E 937457.059

GRID GROUND  
S89°14'59"E 5432.64'

LWDD L-15 Canal (ORB 13809, PG. 1172, PBCR)

LWDD L-15 Canal (ORB 6495, PG. 761, PBCR)

NORTH LINE OF THE SOUTHEAST 1/4 OF SECTION 35, TOWNSHIP 44 SOUTH, RANGE 42 EAST

SOUTH RIGHT-OF-WAY LINE FOR LWDD L-15 CANAL  
S89°14'59"E 952.13'

11.31' LWDD EXCLUSIVE EASEMENT (ORB 34619, PG. 856 & ORB 34840, PAGE 1167)

### LEGEND

- AE = Access Easement
- C/L = Center Line
- CCR = Certified Corner Record
- CONC. = Concrete
- CB = Cord Bearing
- CD = Cord Distance
- Δ = Delta (Central Angle)
- DE = Drainage Easement
- FND. = Found
- LSE = Lift Station Easement
- LME = Lake Maintenance Easement
- LMAE = Lake Maintenance Access Easement
- L = Length of Arc
- LBE = Landscape Buffer Easement
- LWDD = Lake Worth Drainage District
- NAD = North American Datum
- (NR) = Non Radial
- OHE = Roof Overhang Easement
- ORB = Official Records Book
- ⊙ = Permanent Control Point (PCP)
- PBCR = Palm Beach County Records
- PCN = Parcel Control Number
- PDE = Public Drainage Easement
- PG. = Page
- PB = Plat Book
- PRM = Permanent Reference Monument
- R = Radius
- OHE = Maintenance and Roof Overhang Easement
- R/W = Right-of-Way
- (TYP.) = Typical
- UE = Utility Easement
- = Set 4"x4" Concrete (PRM) W/Aluminum Disc Stamped "LB 7055 PRM" Unless Otherwise Noted
- = Set Nail & Brass Disc Stamped "LB 7055 PRM" Unless Otherwise Noted

WEST LINE OF THE SOUTHEAST 1/4 OF SECTION 35, TOWNSHIP 44 SOUTH, RANGE 42 EAST

GRID GROUND  
N01°56'47"E 5476.83'

52nd DRIVE SOUTH (OB 1088, PG. 518, PBCR) (50' PUBLIC RIGHT-OF-WAY)

EAST R/W LINE FOR 52nd DRIVE SOUTH

NORTH LINE PER (ORB 30058, PG 5, PBCR)  
S89°08'56"E 297.38'

MATCHLINE - SEE SHEET 7

MATCHLINE - SEE SHEET 3



2035 Vista Parkway, West Palm Beach, FL 33411  
Phone No. 866.909.2220 www.wginc.com  
Cert No. 6091 - LB No. 7055

THIS INSTRUMENT WAS PREPARED BY KELSEY M. SMITH, P.S.M. PROFESSIONAL SURVEYOR AND MAPPER, LICENSE NO. 7096 FOR THE FIRM: WGL, INC.